

# BIRTHDAY PARTIES



## PARTY STARTER

Standard Session (2.5 Hr)

**\$33**

PER JUNIOR

**\$48**

PER CHILD

## PARTY XTREME

Extended Session (3.5 Hr)

**\$45**

PER JUNIOR

**\$62**

PER CHILD

Minimum 8 participants. \*Supervision applies, please refer to supervision requirements in FAQs.

Adventurers of all ages are invited to bring along their friends and family for a tremendous birthday treat! Lock in hair-raising, adrenaline-pumping fun as your group tackles obstacles high amongst the treetops! A perfect way to create some special memories as you reach new heights together!



Free voucher for the  
Guest of Honour



Free downloadable  
digital invitation

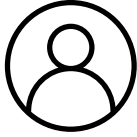


Certificate of Achievement  
for all participants



10% discount on all participants  
(For groups of 10+)

## OPTIONAL EXTRAS

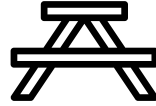


Party Host

Hire a Party Host to climb with and engage your kids.

Standard Session (2.5 Hr)	\$190.00
Extended Session (3.5 Hr)	\$230.00

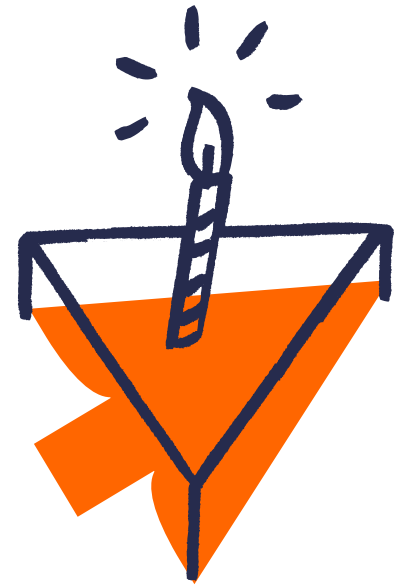
Min 8 - Max 12 children per instructor.



Hire a space\*

Reserve a space to gather around the all important birthday cake and refuel after a climb.

Picnic Table	\$35.00
Gazebo	\$65.00
Covered Deck	\$80.00
Room	\$90.00
TreeHut	\$100.00



\*prices listed are for 2.5 hr standard sessions + 1 hr after session ends (or until park closes). Availability of 'spaces' varies per park. Please refer to page 4 for further location breakdown.

## HOW TO BOOK

### STEP 1

- Choose your birthday package
- Decide on how many children and grown-ups will be invited.

\*Supervision applies, please refer to supervision requirements in FAQs.

### STEP 2

- Select a date and time
- Fill out the online birthday booking form.
- Our Parks will contact you within 48 hours.
- Find your [Park Contact details here.](#)

### STEP 3

- We'll contact you to work out the booking deposit and provide any extra information for your party (i.e. arrival times, meeting location).

### STEP 4

- Invite your friends! You can use our downloadable birthday invitation found on our website!

### STEP 5

- Final confirmation of numbers is due 10 days out from your booking date
- Collect all the waiver forms from participants to provide on arrival

### STEP 6

- Swing into action on the party day!
- Bring along your own catering and goodies
- Have FUN!

## FAQS

### Supervision Requirements

Our regular supervision ratios still apply for birthday parties.

- Juniors(3-7) Grown-Up supervision is required from the ground for this age group. A ticket is not required for ground supervision. There is no Grown-Up participation on Junior & Junior Pro courses.
- Child (8 - 17) All participants are priced at our birthday package rates, as per supervision ratios (1 Grown-Up per up to four, Child 8-12yrs). Additional participating Grown-Ups will be the standard ticket rate of \$56 pp.

If you have hired one of our Instructors to look after your group, you will not need to supervise, but we always encourage kids-at-heart to join in the fun too!

### What if it rains?

We are an all-weather activity, with rain just being an added challenge to your climb! We recommend bringing wet weather gear or maybe a change of clothes for the trip home.

### What should we wear?

Climbers are required to wear secure, enclosed shoes, and we recommend weather appropriate clothing, suitable for physical activity. We will provide gloves, but you are welcome to bring your own!

### Does everyone need a waiver form?

Yes, we require each participant to have a waiver form filled before they begin their climb. Guardians will be required to fill the form for participants Under 18yrs of age.

### What about food and drink?

We recommend that you bring your own catering. Select parks have a Kiosk available where there are light snacks and drinks to purchase. Please take your rubbish home.

### Do I need to make payment upfront?

For birthday parties we require a \$100 deposit. Your final numbers and final payment is due 10 days prior.

### What is your cancellation policy?

It is free to cancel or reschedule outside 10 days of your booking.

- Cancellations between 2-10 days of your booking will incur a 50% fee of the total amount.
- Rescheduling within 2-10 days of your booking will incur a 20% fee of the total amount and will be applied to the final invoice.
- Cancellations within 0-2 days of the booking, including no shows, will forfeit the entire booking and will be invoiced for the full amount of the booking.

You can view our full [terms and conditions here](#).